

ApeosPort®-VII

C7773 / C6673 / C5573 / C4473 / C3373 / C3372 / C2273

DocuCentre-VII

C5573 / C4473 / C3373 / C3372 / C2273

The future of productivity is connectivity



Accelerate your Business Forward

The ApeosPort-VII / DocuCentre-VII series from Fuji Xerox is designed to accelerate your business forward, removing technological barriers to allow you greater flexibility to work the way you want to work.

The entire user experience has been redefined, from its clever interactive touch screen and intelligent automated processes, to its seamless integration with cloud services and security features, allowing you powerful control over the creation and distribution of physical and digital documents.

The ApeosPort-VII / DocuCentre-VII series is at the heart of your pathway to realise enhanced business operability and scalability helping you excel today and stay ready for the future.



Intuitive user experience

The latest multifunction devices share the same intuitive user interface that you have come to know and understand on your smart devices for a simple and immersive user experience.

Carefree printer management

Let Fuji Xerox proactively manage the health of your print device with access to the right resources and on-time insights, while you focus on your core business.



ApeosPort-VII

C7773 / C6673 / C5573 / C4473 / C3373 / C3372 / C2273

DocuCentre-VII

C5573 / C4473 / C3373 / C3372 / C2273

Copy/Print

Colour/B&W **70** sheets/minute*1

Scan

Colour/B&W **270** ppm*2

Printing resolution

1200x2400 dpi*3

Mobile and Cloud Ready

Wi-Fi Connectivity

*1: Sheets/minute for C7773, 65 sheets/minute for C6673, 55 sheets/minute for C5573, 45 sheets/minute for C4473, 35 sheets/minute for C3373, 30 sheets/minute for C3372 and 25 sheets/minute for C2273.

*2: PPM by single-pass duplex scanning using the Duplex Automatic Document Feeder C2-PC. 154 ppm when using the Duplex Automatic Document Feeder B1-PC.

*3: DPI when the document type is set to photo. 600 x 600 dpi for texts, text/photos, and maps.



360° data security

Secure data confidentiality, integrity and availability with strong device level encryption, document rights management and potential data backup creation.



Connect on demand

As your business evolves, Fuji Xerox solutions and services can help you with your transition smoothly and seamlessly.



Intuitive User Experience

A more connected world is the key philosophy behind Fuji Xerox's pursuit to re-define the user experience – and this is embodied in the ApeosPort-VII/DocuCentre-VII Series.

Incorporating familiar gestures of tap, swipe and select, and customisation to suit your workflow, the redesigned touch panel is your gateway to a new dimension of operability. Easy connectivity options with mobile devices and various cloud services, and a range of smart sensors working in the background to make sure the device is ready to go, when you need it, as you need it.

All new User Interface (UI)



Completely renewed UI panel design

The new UI panel can be operated with a tap and swipe just like a smartphone, adding an intuitive and familiar user experience to device operations. All operations can be completed using a single finger on the 10.1 inch colour touch panel. The improved menu navigation makes finding menu items easy, with fewer steps, improving overall operability.

Adjustable UI panel angle

A tilt mechanism has been adopted to enable angle adjustment, enabling the screen to be adjusted to avoid light reflections, or for the user to adjust its angle for an easier view.

Advanced operability

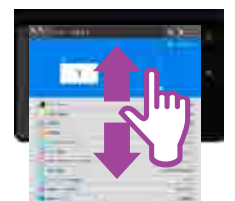
Colourful and user-friendly

Each function has been cleverly grouped by colour, allowing easy user recognition. Frequently used basic functions are displayed in the coloured area so they can be easily found and actioned.



Easy to find and locate

A hierarchy-free screen structure enables the various settings to be checked in a list. Detailed settings can also be specified via tap and swipe operations with a single finger.



Support for multiple languages

The device supports multiple languages including Japanese, English, Chinese (simplified/traditional), Korean, Thai, and Vietnamese, and can be easily switched to accommodate different users.

Selecting a destination becomes even easier

Destinations can be easily specified from the UI panel when sending a fax, and when sending an email or storing data to your computer when scanning. With the uniform display, only the usable functions and destinations will be displayed according to what you have entered. Even if you are unaccustomed to operating this device, you should be able to specify your destination without worries.

Mobility

Near Field Communication (NFC)

The Fuji Xerox ApeosPort / DocuCentre VII series offers NFC technology as a standard, for simplifying the print and scan process. Using NFC technology, a contactless communication can be established between a mobile and the multifunction device.

Wireless Option

The ApeosPort / DocuCentre VII series comes with the Wi-Fi option for the freedom to put the device right where you need it. Also with Wi-Fi Direct®, mobile devices can connect directly (and securely).

Mobile App

Fuji Xerox Print Utility Mobile App enables users to print directly from iOS or Android™ devices, putting mobile printing and scanning convenience at your fingertips. Print stored photo albums, web pages or shoot and print on the go from your iOS or Android™ device. Simply wave your NFC enabled mobile device on the multifunction device to automatically launch Print Utility and you are ready to print or scan.



Portable UI

Your smartphone (iOS and Android™) can be used as a portable UI panel. Simply set a job on your smartphone and touch the NFC (near field communication) reader of the multifunction device to perform basic operations such as copy, scan and fax (Store to Folder or E-mail).

Up to 30 favourites can be registered

Portable UI for Business enables up to 30 frequently used sets of settings to be registered as favourites. These settings can be recalled with a single touch. The destination for sending faxes or saving scanned data can also be registered for added convenience.

Fuji Xerox Cloud Services



Storage

Use Cloud Service Hub to connect with your favourite cloud storage.



Direct Print

Use Cloud On-Demand Print feature to directly print from Fuji Xerox cloud server while visiting remote office location.



Document Security

Cloud based solution of Final Code allows user to set document rights at the device itself.



Device Accounting

Users can access Device log management service on web browser to gather usage data and allocate cost to relevant users.

User Friendly Operations

User friendliness via light and sound

The device cleverly uses light and sound to notify the user of its state. A gentle sound is easily heard over office noise, changing to correctly notify the user of a completed job. The center tray area is equipped with a sensor – a soft blue light flashes while printing and stays lit when printing is completed, signifying a job ready for collection. This reduces information leaks due to unretrieved printed documents.



Smart WelcomEyes

Sensors installed in the multifunction device detect an approaching user, automatically waking the device from sleep mode. This allows sleep mode to be engaged permanently for excellent energy saving – while ensuring that the device is ready to go, when you need it.

Document multi-feed detection

The Duplex Automatic Document Feeder (DADF) features an ultrasonic sensor that is capable of detecting overlapping documents feeding incorrectly, preventing scanning errors when copying or scanning multiple documents.*

* Provided for C7773 / C6673 only.

Widely supporting various paper types

From postcards to long paper

The device supports a wide variety of sizes and weights, from envelopes, postcards to long documents up to a maximum of 320 x 1200 mm*¹, and from 52 to 300gsm. Long printing*² feature gives the ability to print longer documents such as banners.



*1: Printable area is 305 x 1194 mm.

*2: Only supported by the PCL driver and the Adobe® PostScript®3™ driver.

Retractable paper tray closed with a gentle push

Paper trays are equipped with a retracting mechanism that gently closes the tray without pushing it in all the way.



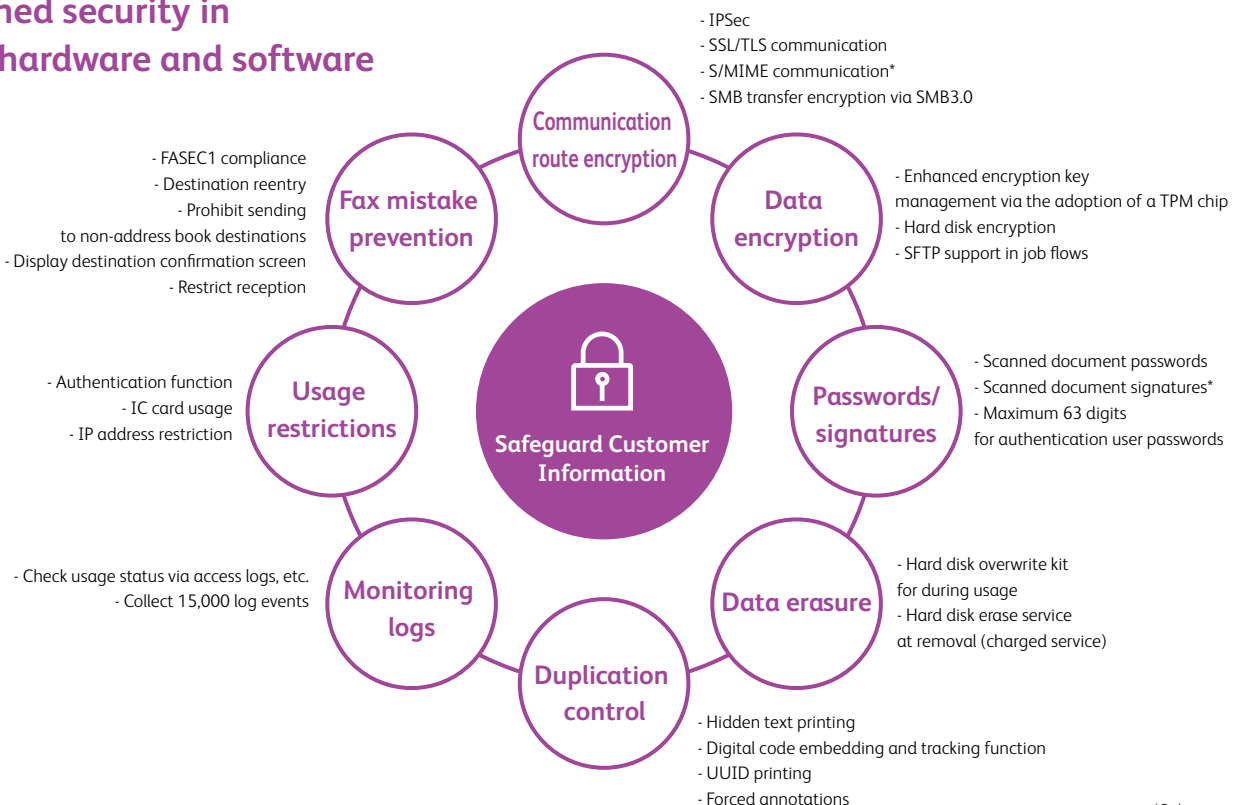


360° data security

Fuji Xerox proudly defines its holistic security approach on the basic principles of Confidentiality, Integrity and Availability.

The ApeosPort-VII/DocuCentre-VII Series incorporates security features to combat the significant threats facing the entire information management life cycle; starting at device level with document creation, to setting access rights for document sharing both internally and externally, to creating potential backup plans for all scanned documents for business continuity planning.

Enriched security in both hardware and software



*Only supported by ApeosPort.



Connect on demand

With the ever evolving world of connectivity, Fuji Xerox is continuously working towards helping our customers achieve a common vision of seamless workflow integration to overcome redundancies, reduce turnaround times and the flexibility of working anytime, anywhere.

Connect the ApeosPort-VII/DocuCentre-VII Series with existing document workflows over cloud services and internal processes to achieve an optimum level of scalability for enhanced productivity.

Secure, easy printing when away from office

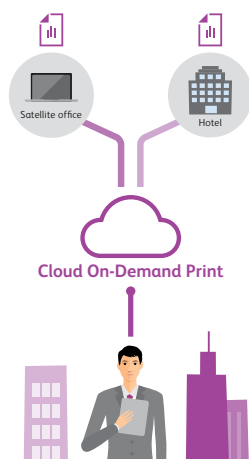
Inconveniences we hear

- When I need to print away from my office, it is troublesome to ask someone else to print for me by sending the file by e-mail or handing a USB flash memory, or installing a printer driver to my laptop.
- When conducting business with people from different departments, the required materials and corrected documents after meetings cannot be immediately printed because there is no LAN environment that can be commonly used.

As long as there is an Internet connection, Cloud On-Demand Print can be used to easily print via the cloud at external offices.

Cloud On-Demand Print

Register documents on a cloud server from a computer or mobile device and print them from a multifunction device at the location using an ID and password. There is no risk of losing data and you do not need a dedicated driver. The required documents can be printed easily and securely when away from the office.



More efficient digitisation processes

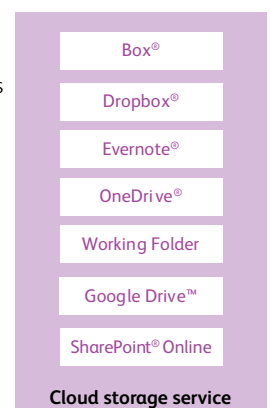
Inconveniences we hear

- We would like to switch to file sharing on the cloud but are concerned about whether scanning and searching will remain as smooth as before
- A large amount of time and effort is spent on entering and filing large amounts of accounting vouchers to accounting software

Multiple cloud services can be integrated into a single service with Cloud Service Hub. It also enables linkage with business cloud services of various companies and enables smooth operations.

Cloud Service Hub

In addition to Working Folder, you can scan to and search cloud storage services such as Box®, Dropbox®, Evernote®, GoogleDrive™, OneDrive®, SharePoint® using a single login. Search multiple cloud services to locate your required document thanks to automatic OCR processing of your scanned documents.



 Cloud Service Hub

Easy accounting of multifunction device usage data in multiple offices

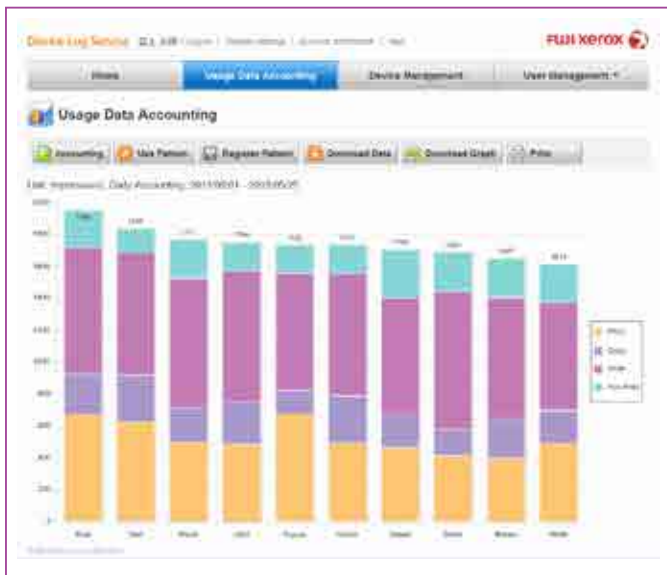
Inconveniences we hear

- Telecommuting has made it impossible for a company to calculate how much documents are printed by each department.
- Since the usage data is collected and totalised in different ways by each office, the company cannot allocate costs by looking at the overall balance.

The Device Log Service enables the logs of multifunction devices at multiple offices to be collected and totalised, reducing management costs.

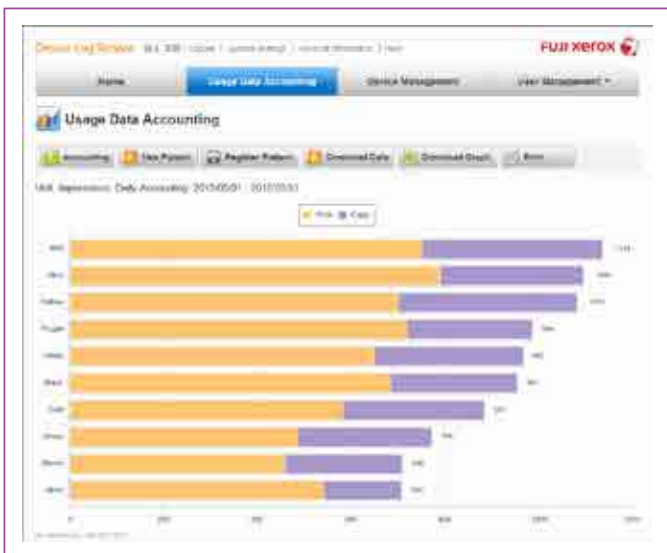
Device Log Service

See who's using the ApeosPort-VII/DocuCentre-VII via a web browser – usage data is displayed as colour-coded charts, without needing a dedicated server or special procedures. This reduces the work of a manager and raises awareness about cost savings.



Example of totalisation by department

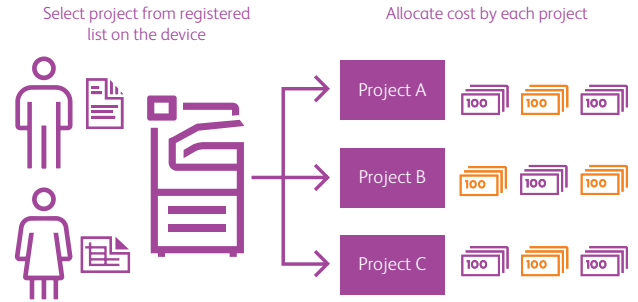
The device log service allows you to gather the usage status of all multifunction devices in one place, such as head office, instead of at separate locations. Total the results of each office and allocate costs to the relevant users.



Totalisation results by user

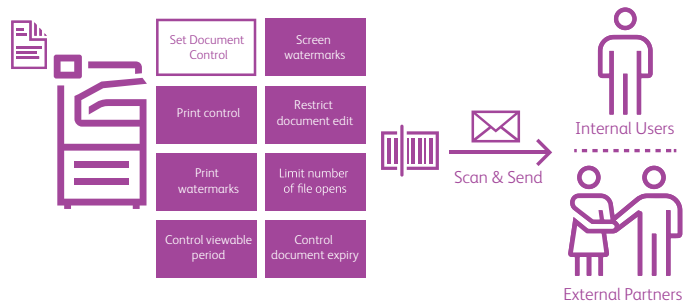
Cost Control

Total control over your print activities gives you better management over your costs and increases your efficiency. With one-touch user authentication, you can efficiently secure all print activities, preventing unnecessary wastage. User-based tracking, along with different levels of authentication (card, code, log-in), makes you an impenetrable gatekeeper – allowing only authorised users to activate the printer. Program the release of prints only when the authorised user has approached the MFD.



Security

Cloud based solution Final Code, uses data-centric security and Information Rights Management (IRM) to control the use of, modification and distribution of your content. With the use of IRM, your information has the highest security standards, reducing the risk of information leaks. If confidential information leaks do occur, you can respond swiftly – securing your data and identifying the source of the leak. When integrated with the Fuji Xerox ApeosPort-VII/DocuCentre-VII, paper documents scanned by the device are secured with the same process as digital documents.





Carefree printer management

Work more efficiently and manage resources more effectively. Easy integration of Remote Services enables remote monitoring of consumables and automatic meter capture*.

* Customers need to activate the following Fuji Xerox services (at no extra cost) to receive described benefits EP-BB: Electronic Partnership Broad Band service

Automated supplies notification and ordering

Fuji Xerox automates the supplies replenishment process, making it possible to be alerted when consumables are running low. For ApeosPort-VII / DocuCentre-VII, we'll automatically order toners, drums and waste toner bottles based on actual usage – minimising order hassles and optimising your inventory.

Automatic meter capture

Eliminate manual steps involved in collecting and reporting meter reads. Automating the meter reading and submission process will help to improve the accuracy of invoices by reporting actual usage.

Green Technology

Newly-developed Super EA-Eco toner

The device achieves a high resolution output of 1200 x 2400 dpi using the industry's smallest toner particles providing clearer texts, lines and more beautiful halftones.



Bio-based plastic/recycled plastic

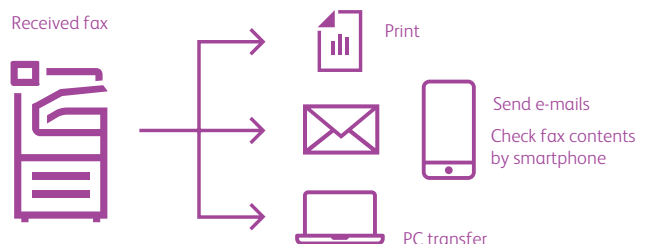
Fuji Xerox multifunction devices adopt bio-based plastic parts using cellulose derived from wood (which reduces CO₂ emissions). Recycled plastics used in some external parts helping to reduce impact on global warming.



Reducing wasteful paper output

Received faxes can be stored in the device folder instead of being immediately printed. You can decide which faxes need to be printed after checking them on the UI panel.

Checking faxes while on the move. Faxes received in the confidential box of the multifunction device can be transferred to a smartphone or tablet device for checking outside of the office.



ApeosPort-VII C7773 / C6673 / C5573 / C4473 / C3373 / C3372 / C2273

Functions & Specifications

Basic Specifications/Copy Function

Item	Description
	C7773 C6673 C5573 C4473 C3373 C3372 C2273
Type	Console
Memory capacity	4 GB (Max: 4 GB)
Hard disk capacity ¹⁾	320 GB or larger (Usable space: 128 GB)
Colour Capability	Full Colour
Scan Resolution	600 x 600 dpi
Printing Resolution	1200 x 2400 dpi (High Resolution Photo) 600 x 600 dpi (Text / Text-Photo / Photo / Map)
Warm-up Time	[When Embedded Plug-ins / Custom Services are enabled ²⁾ 36 seconds or less, 30 seconds or less if the main power is on (23 degrees Celsius room temperature) [When Embedded Plug-ins / Custom Services are disabled ²⁾ 30 seconds or less, 24 seconds or less if the main power is on (23 degrees Celsius room temperature)
Original Size	Maximum of A3, 11 x 17", 297 x 432 mm for both Sheet and Book
Paper Size	Max SRA3 (320 x 450 mm), 12 x 18" (305 x 457 mm), A3 [12 x 19" (305 x 483 mm), 320 x 483 mm when using Bypass Tray] Min A5, Postcard (100 x 148 mm)[89 x 98 mm when using Bypass Tray] Image loss width ³⁾ Lead edge 4.0 mm, Trail edge 2.0 mm, Right/Left edge 2.0 mm
Paper Weight ⁴⁾	Paper Tray 52 to 300 gsm Bypass Tray 52 to 300 gsm
First Copy Output Time	
B/W ⁵⁾	3.3 sec. 3.3 sec. 3.7 sec. 4.4 sec. 4.9 sec. 4.9 sec. 6.3 sec.
Colour ⁶⁾	4.1 sec. 4.1 sec. 5.2 sec. 5.7 sec. 6.7 sec. 6.7 sec. 8.7 sec.
Continuous Copy Speed ⁷⁾	A4 LEF / B5 LEF B/W: 70 Colour: 70 B/W: 65 Colour: 65 B/W: 55 Colour: 55 B/W: 45 Colour: 45 B/W: 35 Colour: 35 B/W: 30 Colour: 30 B/W: 25 Colour: 25 A4 / B5 B/W: 50 Colour: 50 B/W: 47 Colour: 47 B/W: 40 Colour: 40 B/W: 32 Colour: 32 B/W: 27 Colour: 27 B/W: 23 Colour: 23 B/W: 19 Colour: 19 B4 B/W: 41 Colour: 41 B/W: 38 Colour: 38 B/W: 32 Colour: 32 B/W: 26 Colour: 26 B/W: 23 Colour: 23 B/W: 20 Colour: 20 B/W: 16 Colour: 16 A3 B/W: 35 Colour: 35 B/W: 32 Colour: 32 B/W: 27 Colour: 27 B/W: 22 Colour: 22 B/W: 19 Colour: 19 B/W: 17 Colour: 17 B/W: 14 Colour: 14
Paper Tray Capacity ⁸⁾	Standard 4 Tray Model: 500 sheets x 4-tray + Bypass Tray 90 sheets Tandem Tray Model: 500 sheets x 2-tray + 810 sheets + Bypass Tray 90 sheets Optional Max HCF B1: 2030 sheets 4 Tray Model: 4120 sheets (4 Tray Model + HCF B1) Tandem Tray Model: 5105 sheets (Tandem Tray Model + HCF B1)
Output Tray Capacity ⁹⁾	Upper Center: 250 sheets (A4 LEF) Lower Center: 250 sheets (A4 LEF)
Power Supply	AC220-240 V +/- 10 %, 10 A, 50/60 Hz common
Maximum Power Consumption	[C7773 / C6673 / C5573 / C4473] 2.4 kW Sleep Mode: 0.5 W Ready Mode: 111 W [C3373 / C3372 / C2273] 2.4 kW Sleep Mode: 0.5 W Ready Mode: 75 W
Dimensions	[C7773 / C6673] W 663 x D 793 x H 1169 mm [C5573 / C4473 / C3373 / C3372 / C2273] W 663 x D 723 x H 1141 mm
Weight ¹⁰⁾	[C7773 / C6673] 154 kg [C5573 / C4473 / C3373 / C3372 / C2273] 4 Tray Model: 133 kg Tandem Tray Model: 144 kg

- ¹⁾ The Storage Hard disk capacity is not totally available for customers.
²⁾ Embedded Plug-ins / Custom Services are enabled as factory default. You can change the settings if needed.
³⁾ Up to A3 size.
⁴⁾ It is recommended to use Fuji Xerox recommended paper. Correct print output may not be possible depending on the requirement.
⁵⁾ A4 LEF / Monochrome priority mode.
⁶⁾ A4 LEF / Colour priority mode.
⁷⁾ This unit is sheets/minute. The speed may be reduced due to the image quality adjustment.
⁸⁾ 80 gsm paper.
⁹⁾ 64 gsm paper.
¹⁰⁾ Excluding Toner Cartridge.

Print Function

Item	Description
Type	Built-in type
Continuous Print Speed ¹⁾	Same as the Basic Specifications / Copy Function
Printing Resolution	Standard [PCL Driver] Standard: 1200 x 2400 dpi, High Quality: 1200 x 2400 dpi, High Resolution: 1200 x 1200 dpi Optional ²⁾ [Adobe [®] PostScript [®] 3 TM Driver] High Speed (Standard): 600 x 600 dpi, High Quality: 1200 x 2400 dpi, High Resolution: 1200 x 1200 dpi
Page Description Language	Standard PCL 5 / PCL 6 Optional ²⁾ Adobe [®] PostScript [®] 3 TM
Supported Operating System ³⁾	Standard [PCL Driver] Windows 10 (32bit), Windows 10 (64bit), Windows 8.1 (32bit), Windows 8.1 (64bit), Windows 7 (32bit), Windows 7 (64bit), Windows Server 2016 (64bit), Windows Server 2012 R2 (64bit), Windows Server 2012 (64bit), Windows Server 2008 R2 (64bit), Windows Server 2008 (32bit), Windows Server 2008 (64bit) [Mac OS X Driver] macOS 10.13 / 10.12, OS X 10.11 / 10.10 / 10.9 Optional [Adobe [®] PostScript [®] 3 TM Driver] Windows 10 (32bit), Windows 10 (64bit), Windows 8.1 (32bit), Windows 8.1 (64bit), Windows 7 (32bit), Windows 7 (64bit), Windows Server 2016 (64bit), Windows Server 2012 R2 (64bit), Windows Server 2012 (64bit), Windows Server 2008 R2 (64bit), Windows Server 2008 (32bit), Windows Server 2008 (64bit) macOS 10.13 / 10.12, OS X 10.11 / 10.10 / 10.9
Interface	Standard Ethernet 1000BASE-T / 100BASE-TX / 10BASE-T, USB3.0

- ¹⁾ The speed may be reduced due to the image quality adjustment. The printing speed may be reduced depending on the document.
²⁾ Adobe[®] PostScript[®] 3TM is standard on ApeosPort models.
³⁾ Please refer to our official website for the latest supported OS.

Scan Function

Item	Description
Type	Colour Scanner
Scan Resolution	600 x 600 dpi, 400 x 400 dpi, 300 x 300 dpi, 200 x 200 dpi
Scan Speed	Same as the Scan Speed for the Duplex Automatic Document Feeder
Interface	Standard Ethernet 1000BASE-T / 100BASE-TX / 10BASE-T

Fax Function (Optional)

Item	Description
Original Size	Max: A3, 11 x 17", Long document (Longest 600 mm)
Recording Paper Size	Max: A3, 11 x 17" Min: A5
Transmission Time	2 seconds and more but fewer than 3 seconds ¹⁾
Transmission Mode	ITU-T G3
Applicable Lines	Telephone subscriber line, PBX, Fax communication (PSTN), Maximum 3 ports ²⁾ (G3-3 ports)

- ¹⁾ When A4 size document with approximately 700 characters is transmitted in standard image-quality (8 x 3.85 lines/mm) and in high-speed mode (28.8 kbps or faster, JBIG). Only indicates the time for transmitting the image information and does not include the communication control time. The total communication time will vary depending on the contents of the document, the type of machine receiving the fax, and line condition.
²⁾ No. of FAX lines is up to 3 ports. Port refers to number of channels for FAX.

Duplex Automatic Document Feeder B1-PC

Item	Description
	C5573 C4473 C3373 C3372 C2273
Original Size / Paper Weight	Max: A3, 11 x 17"; Min: A5 ¹⁾ 38 to 128 gsm (In Duplex: 50 to 128 gsm)
Capacity ²⁾	130 sheets
Scan Speed ³⁾	Copy (A4 LEF Simplex) B/W: 55 sheets/minute Colour: 55 sheets/minute Scan B/W: 80 sheets/minute, Colour: 80 sheets/minute (1 pass, 2 sided scanning: B/W: 154 ppm ⁴⁾ , Colour: 154 ppm ⁴⁾) [Fuji Xerox Standard Paper (A4 LEF), 200 dpi, to Folder.]

- ¹⁾ The minimum custom size is 125 x 85 mm.
²⁾ 64 gsm paper.
³⁾ The scanning speed varies depending on the documents.
⁴⁾ 160 ppm for both B/W and colour when Quiet Mode is disabled. This setting can be changed to suit the customer's usage.

Duplex Automatic Document Feeder C2-PC

Item	Description
	C7773 C6673
Original Size / Paper Weight	Max: A3, 11 x 17"; Min: A6 ¹⁾ 38 to 200 gsm (In Duplex: 50 to 200 gsm)
Capacity ²⁾	250 sheets
Scan Speed ³⁾	Copy (A4 LEF Simplex) B/W: 70 sheets/minute Colour: 70 sheets/minute Scan B/W: 135 sheets/minute, Colour: 135 sheets/minute (1 pass, 2 sided scanning: B/W: 270 ppm, Colour: 270 ppm) [Fuji Xerox Standard Paper (A4 LEF), 200 dpi, to Folder.]

- ¹⁾ The minimum custom size is 84 x 139.7 mm.
²⁾ 64 gsm paper.
³⁾ The scanning speed varies depending on the documents.

HCF B1 (Optional)

Item	Description
Paper Size	A4 LEF, Letter LEF, B5 LEF
Paper Weight	55 to 216 gsm
Feeding Capacity / Number of Tray [*]	2030 sheets x 1-tray
Dimensions	W 389 x D 610 x H 380 mm
Weight	29 kg

^{*}80 gsm paper.

Envelope Tray (Optional)

Item	Description
Paper Size	DL LEF, ISO-C4, ISO-C5 LEF, ISO-C6 LEF, Commercial #10 LEF, Monarch7.3/4 LEF Custom Size: 241 x 372 mm to 90 x 98 mm
Paper Weight	Envelope: 75 to 90 gsm, Postcard: 106 to 220 gsm
Feeding Capacity / Number of Tray [*]	50 sheets x 1-tray
Dimensions	W 620 x D 566 x H 87 mm
Weight	3 kg

^{*}Commercial #10 Envelope.

Side Tray

Item	Description
Paper Capacity [*]	100 sheets
Dimensions	W 324 x D 567 x H 228 mm

^{*}64 gsm paper.

Finisher-A2 (Optional)

Item	Description	
Type	Sort (Offset available) ^{*1} / Stack (Offset available) ^{*1}	
Paper Size	Max: A3, 11 x 17". Min: A5, Postcard (100 x 148 mm)	
Paper Weight ^{*2}	52 to 256 gsm	
Paper Capacity ^{*3}	Finishing Tray [Without Stapling] A4 LEF: 500 sheets, B4: 250 sheets, A3 or larger: 200 sheets, Mixed Size Stacking ^{*4} : 250 sheets [With Stapling] 30 sets or A4 LEF: 500 sheets, B4: 250 sheets, A3 or larger: 200 sheets, Mixed Size Stacking ^{*4} : 250 sheets	
Staple	Capacity	A4: 50 sheets (90 gsm or less) B4 or larger: 30 sheets (90 gsm or less)
	Paper Size	Max: A3, 11 x 17" Min: B5 LEF
	Position	Single stapling, Dual stapling
Dimensions	W 478 x D 461 x H 238 mm	
Weight	11 kg	

* Note: The unit cannot be installed on ApeosPort-VII C773/C6673.

*1 [No Offset] is selected by factory default. The settings can be changed according to the customer's use situation.

*2 Documents may not be printed correctly depending on usage conditions. (52 to 55 gsm)

*3 64 gsm paper.

*4 When larger size sheets are stacked on top of smaller size sheets. 250 sheets when large size sheets are smaller than A3. 200 sheets when large size sheets are A3 or larger.

The same applies to when staple-free and stapled bindings are mixed or different stapling positions are mixed.

Finisher-B3 (Optional)

Item	Description	
Type	Sort (Offset available) ^{*1} / Stack (Offset available) ^{*1} ^{*2}	
Paper Size ^{*3}	Max: A3, 11 x 17". Min: A5	
Paper Weight ^{*4}	52 to 300 gsm	
Paper Capacity ^{*5}	[Without Stapling] A4: 2000 sheets, B4 or larger: 1000 sheets, Mixed Size Stacking ^{*6} : 300 sheets [With Stapling] A4: 100 sets or 1000 sheets ^{*7} , B4 or larger: 75 sets or 750 sheets [With Booklet Finishing ^{*8}] 50 sets or 600 sheets [With Fold ^{*9}] 500 sheets	
Staple	Capacity	50 sheets (90 gsm or less)
	Paper Size	Max: A3, 11 x 17" Min: A5 LEF
	Paper Weight	52 to 256 gsm
	Position	Single stapling, Dual stapling
Punch ^{*9}	Number of Holes	2-hole / 4-hole punch or 2-hole / 3-hole punch (US Specifications)
	Paper Size	A3, 11 x 17", B4 ^{*10} , A4 ^{*11} , A4 LEF, Letter ^{*11} , Letter LEF, B5 ^{*11} , B5 LEF ^{*10} , A5 ^{*11} , A5 LEF ^{*11}
	Paper Weight	52 to 220 gsm
Booklet Finishing ^{*8}	Capacity	Saddle Staple: 15 sheets Single Fold: 5 sheets
	Paper Size	Max: A3, 11 x 17" Min: A4, Letter
	Paper Weight	Saddle Staple: 64 to 80 gsm ^{*12} Single Fold: 64 to 105 gsm
Dimensions ^{*13}	W 592 x D 653 x H 1041 mm With Booklet Finisher: W 592 x D 673 x H 1079 mm	
Weight	25 kg With Booklet Finisher: 35 kg	

*1 The offset feature is set to disabled by factory default. The setting can be changed as necessary.

*2 Outputs whose weight is 257 gsm and more or width is less than 210 mm are delivered without offset stacking.

*3 Paper in the sizes larger than A3 or 11 x 17" or smaller than A5 are delivered to the Centre Tray.

*4 Documents may not be printed correctly depending on usage conditions. (52 to 55 gsm, 257 gsm and more)

*5 64 gsm paper.

*6 When larger size sheets are stacked on top of smaller size sheets.

*7 75 sets or 750 sheets with dual stapling.

*8 The Booklet Finishing function requires the optional Booklet Maker Unit for Finisher-B3. After a job with the Booklet Finishing function specified has been output, the next job may not be delivered until the sheets are removed from the output tray. Also, if larger size sheets are stacked on top of smaller size sheets after a job with the Booklet Finishing function specified has been run, the next job may not be delivered until the sheets are removed from the output tray.

*9 The Punch function requires the optional 2/4 Hole Punch Kit for Finisher-B3 or US 2/3 Hole Punch Kit for Finisher-B3.

*10 4-hole punch is not applicable.

*11 3-hole, 4-hole punch is not applicable.

*12 Covers can be up to 220 gsm (Extra Heavyweight).

*13 Inner connector within the body is excluded.

C3 Finisher with Booklet Maker (Optional)

Item	Description	C3 Finisher with Booklet Maker
Type	Output Tray	Sort / Stack
	Finishing Tray	Sort (Offset available) / Stack (Offset available)
	Booklet Tray	-
Paper Size	Output Tray	Max: 12 x 19" (305 x 483 mm) Min: Postcard (100 x 148 mm)
	Finishing Tray	Max: 12 x 19" (305 x 483 mm) Min: B5 LEF
Paper Weight	Output Tray	52 to 300 gsm ^{*1}
Paper Capacity ^{*2}	Output Tray	52 to 300 gsm ^{*1}
	Finishing Tray	500 sheets (A4)
Staple	Capacity	50 sheets (90 gsm or less) ^{*5}
	Paper Size	Max: A3, 11 x 17" Min: B5 LEF
	Paper Weight	52 to 300 gsm
Punch ^{*6}	Position	Single stapling, Dual stapling
	Number of Holes	2-hole / 4-hole punch or 2-hole / 3-hole punch (US Specifications)
	Paper Size	A3, 11 x 17", B4, A4 ^{*7} , A4 LEF, Letter ^{*7} , Letter LEF, B5 LEF, 7.25 x 10.5" (184 x 267 mm) LEF, 8 x 10" (203 x 254 mm), 8 x 10" (203 x 254 mm) LEF, 16K (194 x 267 mm) LEF, Cover A4 (223 x 297 mm) LEF, 9 x 11" (229 x 279 mm) LEF, 215 x 315 mm, 8.5 x 13" (216 x 330 mm), Legal, 11 x 15" (279 x 381 mm), 8K (267 x 388 mm)
Booklet Finishing	Paper Weight	52 to 220 gsm
	Capacity	-
	Paper Size	-
Dimensions ^{*9}	Capacity	Saddle Staple: 16 sheets (90 gsm or less) ^{*8} Single Fold: 5 sheets (90 gsm or less) ^{*8}
	Paper Size	Max: SRA3 (320 x 450 mm), 12 x 18" (305 x 457 mm) Min: B5
	Paper Weight	Saddle Staple: 60 to 300 gsm Single Fold: 60 to 300 gsm
Weight	Dimensions ^{*9}	W 790 x D 589 x H 1056 mm When Folder Unit CD1 is installed: W 1025 x D 726 x H 1056 mm
	Weight	66 kg When Folder Unit CD1 is installed: 118 kg

* Note: Transport Unit H3 is required.

*1 52 to 55 gsm output paper may not be aligned properly depending on the paper type.

*2 64 gsm paper.

*3 When larger size sheets are stacked on top of smaller size sheets.

*4 When the output paper size is the same.

*5 Up to 65 sheets can be stapled when the C3 Finisher Staple Unit 65 Sheets is installed. However, depending on the paper type, incorrect stapling such as uneven edge alignment of sets may occur.

*6 Optional.

*7 3-hole punch is not applicable.

*8 The maximum number of sheets varies depending on the paper weight. Booklet may not be tightly closed depending on the size or type of the paper.

*9 Inner connector within the body is excluded.

Folder Unit CD1 (Optional)

Item	Description
Z Fold	Paper Size: A3, 11 x 17", B4
Half Sheet	Paper Weight: 60 to 90 gsm
Tri-fold	Paper Size: A4, Letter
	Paper Weight: 60 to 90 gsm
	Paper Capacity ^{*1} : 40 sheets
Power Supply	AC220-240 V +/- 10 %, 0.6 A, 50/60 Hz common ^{*2}
Maximum Power Consumption	144 W
Dimensions	W 232 x D 726 x H 991 mm
Weight	53 kg

* Note: Optional of C3 Finisher with Booklet Maker.

*1 64 gsm paper.


*2 Power supply separate from the main unit is required.

Notes

- 1) If the storage media (such as hard disk drives) of the base unit fail, loss of received data, accumulated data, registered setting data, etc. may occur. In no event shall Fuji Xerox be liable for any damages whatsoever arising from loss of data.
- 2) Functional spare parts will be available for at least 7 years after the product is no longer manufactured.

All product names and company names mentioned in this brochure are trademarks or registered trademarks of their respective companies. The product specifications, appearance and other details in this brochure are subject to change without notice for improvements.

Reproduction Prohibitions Please note that reproduction of the following is prohibited by law : Domestic and foreign currencies, government-issued securities, and national bonds and local bond certificates. Unused postage stamps, post cards, etc. Certificate stamps stipulated by law. Reproducing works forming the subject matter of copyright (literary works, musical works, paintings, engravings, maps, cinematographic works, drawings, photographic works, etc.) is not permitted unless the reproduction is for the purpose of personal use, family use or other similar uses within a limited circle.

 **For Your Safety**
Before using the product, read the Instruction Manual carefully for proper use. Use the product with the power source and voltage specified. Be sure to establish ground connection. Otherwise, electronic shock may result in the case of a failure or short circuit.

For more information or detailed product specification,
please call us on **13 14 12** or visit us at fujixerox.com.au

Fuji Xerox Australia Pty. Ltd. ABN 63 000 341 819
Australian Head Office: 8 Khartoum Road, Macquarie Park NSW 2113
Phone (02) 9856 5000 Fax (02) 9856 5003

